

Senator



Senator Series 5

the ultimate touring experience



Incorporating the design expertise that has won numerous product awards in recent years, Senator is now firmly established as one of the most well-built and well-equipped touring homes available today.

Series 5 features seven established layouts plus the all new Senator Virginia, the first single axle model to feature the highly desirable combination of a rear island bed and separate shower centre washroom.

All models are now built in a 7'6" wide fully bonded body shell, supplied with a six year integrity guarantee, to provide an extra dimension in comfort and practicality.

Outside Senator is given a stunning new look with re-styled full height front and rear ABS panels, a one piece exterior door with opening window and new design 14" alloy wheels, to announce that you travel and arrive in style. Whilst inside, a five star equipment manifesto which already includes an IDM-4 infra-red alarm and a Radio/CD/MP3 player, is further enhanced with the introduction of the latest large capacity Dometic refrigerators, a microwave oven and an Al-ko Secure wheel lock.

So if you require the very best in touring home design, supplied at a competitive retail price, then there is simply no better choice than Senator.



Senator Wyoming

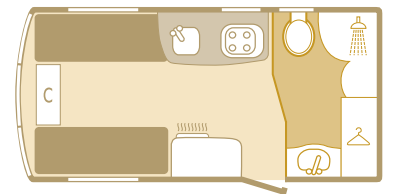
SENATOR Specification Includes

- Fully bonded exterior body shell with 6-Year Integrity Guarantee
- 14" Alloy wheels with low profile tyres
- Al-ko chassis mounted spare wheel carrier and spare wheel (steel spare wheel)
- Al-ko AKS 3004 stabiliser
- Al-ko Secure portable wheel lock
- Remi Top 'slide and tilt' sun roof with integral ceiling lighting
- Status telescopic directional television aerial
- Omnivent 3-Speed extractor fan
- Radio/CD/MP3 player
- IDM-4 Infra red security alarm
- Dometic 104 litre refrigerator with electronic ignition and full width freezer compartment (model specific)
- Spinflo recessed 4-burner hob unit incorporating flush fitting glass lid
- Spinflo combined grill and domestic style glass fronted oven
- Microwave oven
- Truma 3kw space heater
- Onboard water tank
- Choice of three contrasting soft furnishings with co-ordinating lined curtains, bolster and scatter cushions
- Loose fit drop in carpets

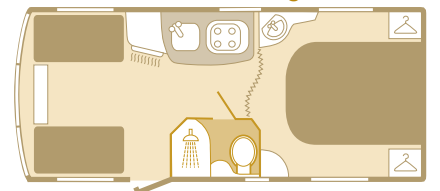


Senator range

Vermont 2 Berth

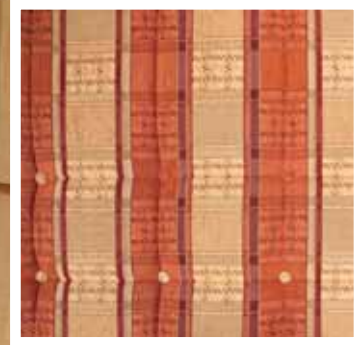


Virginia 4 Berth

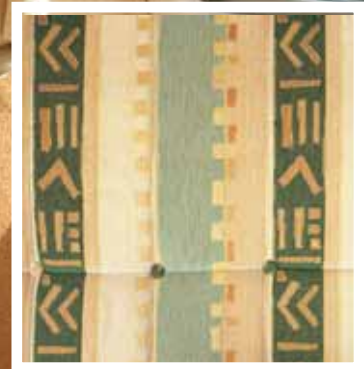




Standard Matisse upholstery



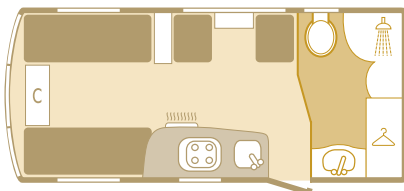
Optional Rembrandt upholstery



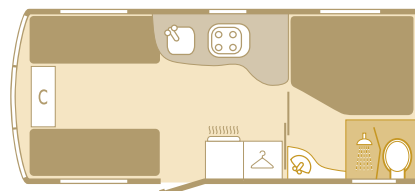
Optional Picasso upholstery

**SENATOR
SOFT FURNISHINGS**

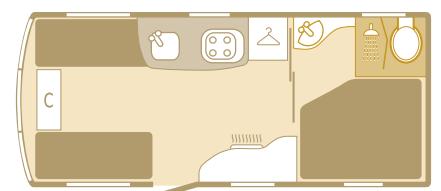
Arizona 4 Berth



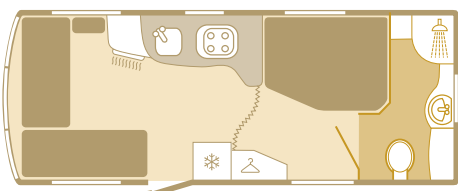
Oklahoma 4 Berth



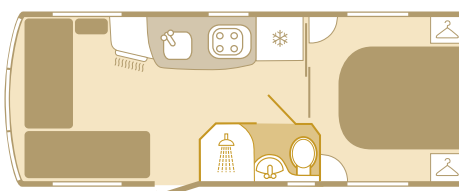
Indiana 4 Berth



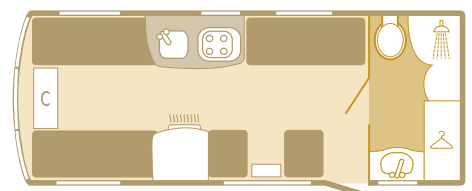
Wyoming (twin axle) 4 Berth



Louisiana (twin axle) 4 Berth



Carolina (twin axle) 6 Berth



Senator Technical Specifications and Features

BED SIZES

VERMONT

- Front Saloon 6'10" x 4'7" or 2 @ 6'2" x 2'3"

ARIZONA

- Front Saloon 6'10" x 4'7" or 2 @ 6'2" x 2'3", O/Side Single 5'11" x 2'2" & O/Head Single 5'9" x 2'0"

OKLAHOMA

- Front Saloon 6'10" x 4'6" or 1 @ 6'2" x 2'3" & 1 @ 6'1" x 2'3", Rear Double 6'4" x 4'6"

INDIANA

- Front Saloon 6'10" x 3'9" or 1 @ 5'4" x 2'3" & 1 @ 5'3" x 2'3", Rear Double 6'4" x 4'6"

VIRGINIA

- Front Saloon 6'10" x 4'7" or 1 @ 4'9" x 2'3" & 1 @ 4'7" x 2'3", Rear Double 6'4" x 4'6"

WYOMING

- Front Saloon 6'11" x 4'5", Rear Double 6'4" x 4'6"

LOUISIANA

- Front Saloon 6'11" x 4'5", Rear Double 6'4" x 4'6"

CAROLINA

- Front Saloon 6'10" x 4'6" or 2 @ 6'2" x 2'3", 2 O/Side Bunks @ 5'11" x 2'1", N/Side Single 5'7" x 2'2", N/S O/Head Single 5'5" x 2'0"

EXTERIOR

* Fully bonded exterior body shell with 6-Year integrity guarantee * Al-ko galvanised chassis with Euro-axle * Al-ko AKS 3004 Stabiliser * Gas strut assisted handbrake * 14" alloy wheels with low profile tyres * Al-ko chassis mounted spare wheel carrier and spare wheel (steel spare wheel) * Al-ko Secure portable wheel lock * Al-Ko caravan jack * Fully insulated walls, floor and roof to grade II classification of EN1645-I (Panel thickness : Sides 28mm, Ceiling 31mm & Floor 44mm) * One piece exterior door with opening window and integral flyscreen and blind * Flush fit Polyplastic double glazed windows to side and rear * Polyplastic double glazed front windows * Full height ABS front panel with high line profile and integral grab handles * Re-engineered gas bottle locker with improved access and storage * Gas locker courtesy light * Triomatic automatic gas regulator change over system (All fuel types) * ABS 'Step-Up' A-Frame fairing * Full height ABS rear panel with integral light cluster and integral grab handles * Individual rear light units * External gas barbeque point * Exterior 230v mains socket * Flush fit awning light * Status telescopic directional television aerial

ELECTRICAL SYSTEM

* Mains electric with three 230v sockets * 230v and 12v internal lighting * TV station with 230v/12v/aerial sockets * Switch mode battery charger with 20 amps output * RCD/MCB protection for mains electric system * 25 metre mains connecting lead

HEATING & WATER SYSTEM

* Truma 3002 3kw gas heater and supplementary 230v Ultraheat system with automatic ignition and silent running night setting * Truma Ultratherm and blown air distribution system * Truma Ultrastore water heater (gas/electric operation) * Truma 30 mbr gas regulator * Swivel electric flush Thetford cassette toilet with integrated header tank * Whale Aqua smart on-board water pump * Onboard water tank * Inboard pressurised hot and cold fresh water system with reinforced hosing * Large bore rigid waste plumbing routed to side of tourer * Shower unit with ceramic ball mixer tap * Walk in domestic style plastic shower cubicle (model specific) * Bi-fold partition shower door in combination washrooms (model specific) * Non-slip shower mat * Fully fitted vanity unit, wall mirrors and integral storage

KITCHEN EQUIPMENT

* Dometic 104 litre refrigerator with electronic ignition and full width freezer compartment (model specific) * Dometic 150 litre fridge freezer with electronic ignition (model specific) * Spinflo recessed 4-burner hob unit incorporating flush fitting glass hinged lid * Spinflo combined grill and domestic style glass fronted oven with electronic ignition and flame failure device * Microwave oven * Spinflo recessed sink with clip on draining board and ceramic ball mixer tap * Fitted waste bin (model specific) * Chopping board and washing up bowl

FURNITURE & SOFT FURNISHINGS

* Free standing table with dedicated storage * Side dinette occasional table (model specific) * Chest of drawers with fold over coffee table (model specific) * Aircraft Style overhead storage lockers with full size curved locker doors and domestic style metal hinges * Domestic style washroom door and handle * Pull out roller slatted bed * Hinge sprung slatted bed box tops for easy access * Sculpted wooden bunk fall out rails * Fully sprung upholstery (except split cushions used in bunk make up) * Standard 'Matisse' soft furnishings with co-ordinating lined curtains, pelmet covers, bolster and scatter cushions * Optional 'Rembrandt' soft furnishings with co-ordinating lined curtains, bolster and scatter cushions * Optional 'Picasso' soft furnishings with co-ordinating lined curtains, bolster and scatter cushions * Loose fit drop in carpets

GENERAL EQUIPMENT

* Remi Top 'slide and tilt' sun roof with integral ceiling lighting * Mini-Heki sun roof located over rear bedroom (model specific) * Omnivent dual action rooflight mounted extractor fan * Remis integral cassette flyscreen and sunblind to all principal windows * Remis flyscreen and sunblind to 4 way rooflight in saloon * Radio/CD/MP3 player with removable security face * Branded doorwell mat * Analogue clock

SECURITY

* IDM-4 infra-red security alarm * Selectamark electronic tagging * Single key operation on all exterior doors * Vin no. etched to all exterior windows * Vin no. scribed in chassis member

Opposite:
Al-ko Secure wheel lock
Microwave oven
Dometic 104 litre refrigerator
Status directional television aerial

	Berths	Internal Length	Shipping Length	Overall Width	Overall Height	Internal H'room	Awning Size	Tyre Sizes	MTPLM	MRO	Payload Allownce for Essnt Habtatn Equipment	Payload Allownce for Personal Effects	Payload Allownce for Optional Equipment	Total User Payload
Vermont	2	4.922m 16'3"	6.508m 21'5"	2.28m 7'6"	2.71m 8'10"	1.90m 6'3"	940cm	195/70 R14 LI96	1385kg 27.3cwt	1160kg 22.8cwt	99kg 1.9cwt	106kg 2.1cwt	20kg 0.4cwt	225kg 4.4cwt
Arizona	4	5.608m 18'5"	7.194m 23'7"	2.28m 7'6"	2.71m 8'10"	1.90m 6'3"	1009cm	185 R14 LI104	1500kg 29.5cwt	1248kg 24.6cwt	99kg 1.9cwt	133kg 2.6cwt	20kg 0.4cwt	252kg 5.0cwt
Oklahoma	4	5.608m 18'5"	7.194m 23'7"	2.28m 7'6"	2.71m 8'10"	1.90m 6'3"	1009cm	185 R14 LI104	1499kg 29.5cwt	1247kg 24.5cwt	99kg 1.9cwt	133kg 2.6cwt	20kg 0.4cwt	252kg 5.0cwt
Indiana	4	5.608m 18'5"	7.194m 23'7"	2.28m 7'6"	2.71m 8'10"	1.90m 6'3"	1009cm	185 R14 LI104	1500kg 29.5cwt	1248kg 24.6cwt	99kg 1.9cwt	133kg 2.6cwt	20kg 0.4cwt	252kg 5.0cwt
Virginia	4	5.608m 18'5"	7.194m 23'7"	2.28m 7'6"	2.71m 8'10"	1.90m 6'3"	1009cm	185 R14LI104	1499kg 29.5cwt	1247kg 24.5cwt	99kg 1.9cwt	133kg 2.6cwt	20kg 0.4cwt	252kg 5.0cwt
Wyoming	4	6.400m 21'1"	7.890m 25'11"	2.28m 7'6"	2.71m 8'10"	1.90m 6'3"	1088cm	185/65 R14 LI90	1714kg 33.7cwt	1454kg 28.6cwt	99kg 1.9cwt	141kg 2.8cwt	20kg 0.4cwt	260kg 5.1cwt
Louisiana	4	6.400m 21'1"	7.890m 25'11"	2.28m 7'6"	2.71m 8'10"	1.90m 6'3"	1088cm	185/65 R14 LI90	1695kg 33.4cwt	1435kg 28.2cwt	99kg 1.9cwt	141kg 2.8cwt	20kg 0.4cwt	260kg 5.1cwt
Carolina	6	6.400m 21'1"	7.890m 25'11"	2.28m 7'6"	2.71m 8'10"	1.90m 6'3"	1088cm	185/65 R14 LI90	1739kg 34.2cwt	1459kg 28.7cwt	99kg 1.9cwt	161kg 3.2cwt	20kg 0.4cwt	280kg 5.5cwt

A Tolerance in the MRO has been allowed for in the calculations of Payload Margins. The awning length measurement shown is to be interpreted as a guide only and enquiry should be made to individual awning manufacturers for the correct size. All data is calculated using metric weights & measurements. The imperial figures quoted are conversions thereof.



Senator Louisiana



Senator Virginia





www.bailey-caravans.co.uk

South Liberty Lane, Bristol BS3 2SS, England

BAILEY

Senator Vermont

This brochure does not constitute an offer by Bailey Caravans Ltd (Bailey). Bailey reserves the right to alter specifications and prices as market and supply conditions demand. Your Bailey retailer will confirm all specification details prior to you making your purchasing decision. E. & O. E.

Bailey retailers sell our products of their own choice and not as agents of Bailey. Accordingly they have no authority to bind Bailey or to make any representation or undertaking whatsoever on behalf of Bailey.

All household items illustrated in this brochure are used to enhance photography and are for display purposes only. They are not supplied with your touring caravan. Photographic colour reproduction is subject to the limitations of the production process.

Design: trm:vs

Photography: Simon M Dodd

Print: St Ives Direct

Issued October 2006

Product photography in this brochure was shot on location at the following Caravan Club site:

Hurn Lane Caravan Club Site
(members only), Burnham-On-Sea,
Somerset. Tel: 01278 751412

**THE CARAVAN CLUB**

www.caravanclub.co.uk