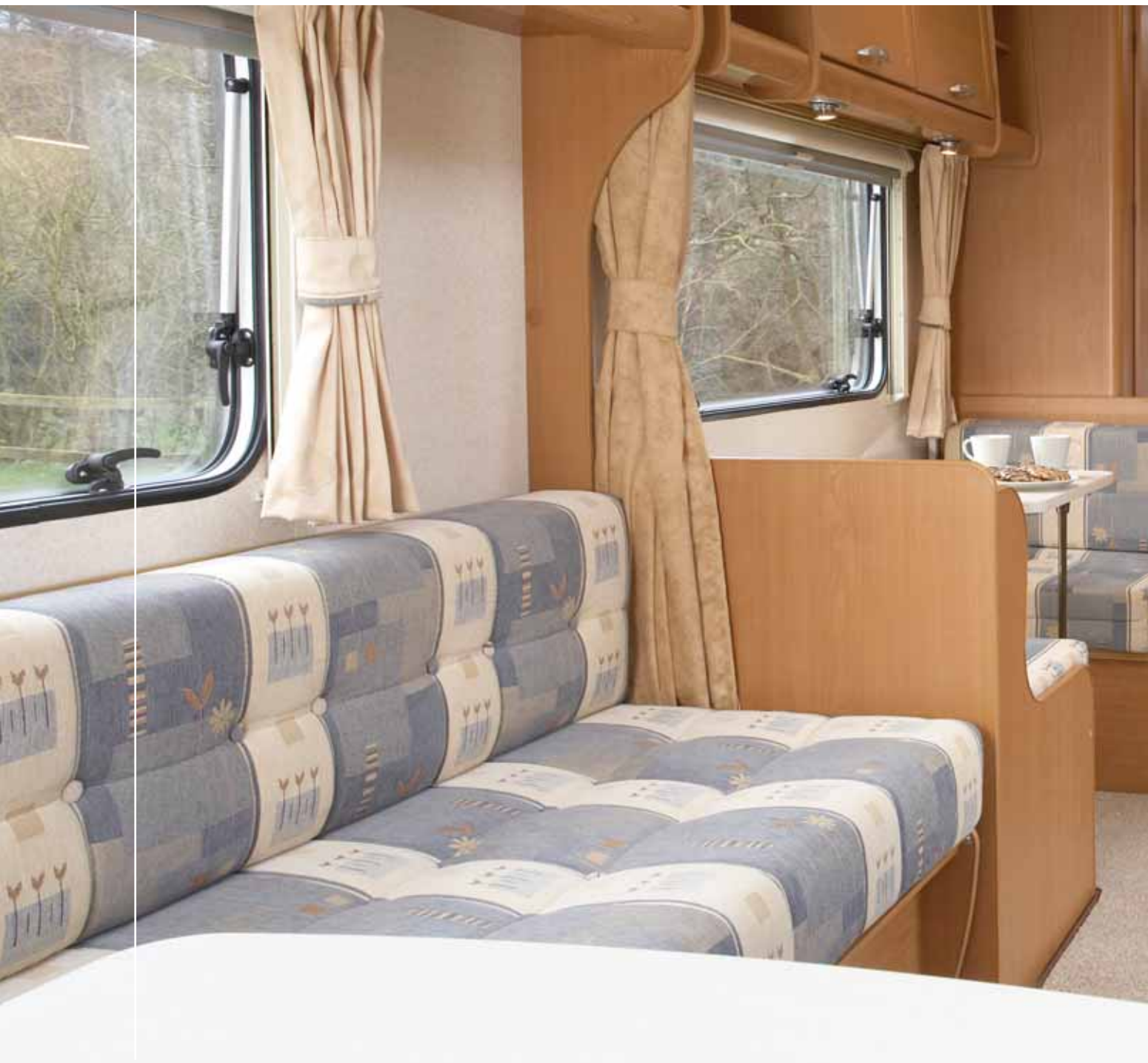




Ranger Series 5

the definitive value for money caravan





Ranger Series 5 The definitive value for money caravan

Ranger has re-written the phrase 'value for money' by delivering a range of well designed, well equipped yet affordable touring homes to a new generation of caravanners. The new Series 5 line-up features a wide choice of seven different models, including the new twin axle 620/6 family layout, with something to suit every requirement.

All models feature a state of the art exterior body shell that is supplied with a market leading six year integrity guarantee to provide long term peace of mind.

Interiors benefit from the installation of a full width 'Panoramic' front window and new Heki II tilting sunroof which enhance the feeling of light and space, whilst family friendly 'Pacific' soft furnishings and drop in carpets combine with new Cherry wood furniture to give Ranger a contemporary look.

Specifications remain exceptionally high for a tourer in this price bracket, with a new Thetford 96 litre refrigerator as standard, and models come supplied with some of the lightest unladen weights available. All this at an unbeatable recommended retail price, means Series 5 sets new standards for a value for money caravan by providing owners with more for less.



Ranger 620/6

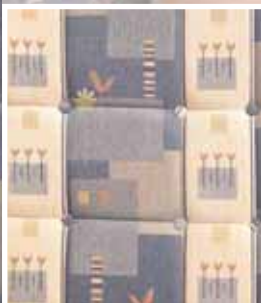
Ranger Series 5

Specification includes:

- **NEW** Full height ABS front panel with high line profile and integral grab handles
- **NEW** Re-engineered gas bottle locker with gas strut assisted door
- **NEW** Full height ABS rear panel with integral light clusters and grab handles
- **NEW** Seitz silver framed double glazed windows throughout
- **NEW** Flush fit awning light
- **NEW** Truma Crystal II water inlet and submersible pump
- **NEW** Walk in plastic lined shower cubicle (model specific)
- **NEW** Thetford 96 litre refrigerator with electronic ignition and full width freezer compartment
- **NEW** Spinflo recessed sink with clip on draining board and ceramic ball mixer tap
- **NEW** Construction Aircraft style overhead storage lockers with re-profiled locker doors and domestic style metal hinges
- **NEW** Bailey 'Cherry' wood veneer
- **NEW** Standard 'Pacific' soft furnishings with co-ordinating lined curtains and scatter cushions
- **NEW** Heki II tilting sunroof with ceiling lighting surround
- **NEW** Clear roof lights in centre of caravan (model specific)



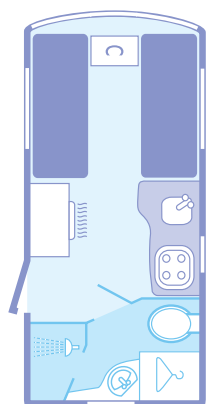
Ranger soft furnishings:



Standard Pacific upholstery

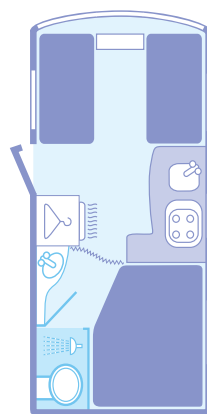
Ranger Series 5

Range layouts



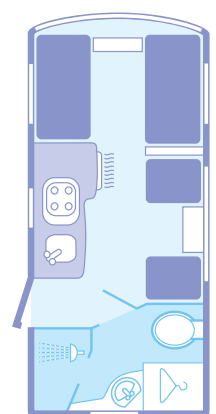
460/2

2 Berth



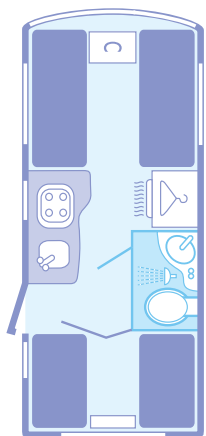
460/4

4 Berth



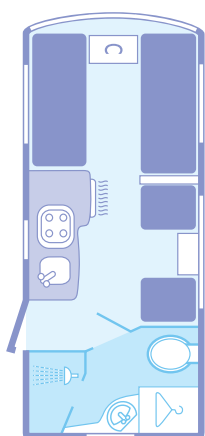
470/4

4 Berth



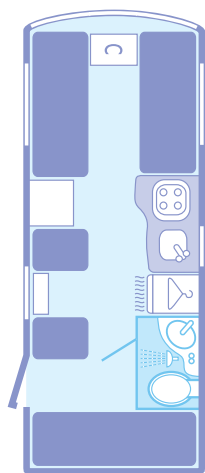
500/5

5 Berth



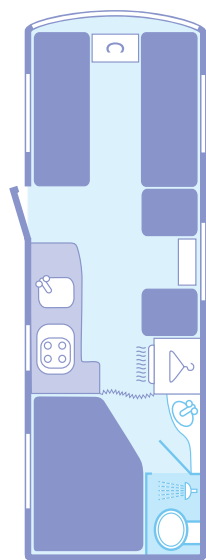
510/4

4 Berth



550/6

6 Berth



620/6

6 Berth



Ranger Series 5

Product specification

EXTERIOR

Fully bonded exterior body shell with 6-Year Integrity Guarantee | Al-ko galvanised chassis with Euro-axle | Gas strut assisted handbrake | 14" wheels with low profile tyres | Fully insulated walls, floor and roof to grade II classification of EN1645-I (Panel thickness: Sides 28mm, Ceiling 31mm & Floor 44mm) | Twin section exterior stable door | Status TV aerial and booster

NEW

Full height ABS front panel with high line profile and integral grab handles | Re-engineered gas bottle locker with gas strut assisted door | Design step-up ABS A-Frame fairing | Full height ABS rear panel with integral light cluster and integral grab handles | Plastic wheel spats awning rail end caps | Seitz full width silver framed double glazed 'Panoramic' front window | Seitz silver framed double glazed windows throughout | Recessed awning light | Design graphics

ELECTRICAL SYSTEM

Mains electric with two 230v sockets | 12v internal lighting | TV station with 230v/12v/aerial sockets | RCD/MCB protection for mains electric system | 25 metre mains connecting lead

NEW

Switch mode battery charger with 20 amps output | Electrical consumer unit

HEATING & WATER SYSTEM

Truma 3002 3kw gas heater & supplementary 230v Ultraheat system with silent running night setting | Truma Ultratherm and blown air distribution system | Truma Ultrastore water heater (gas/electric operation) | Truma 30 mbr gas regulator | Swivel unit Thetford cassette toilet with integrated header tank | Inboard pressurised hot and cold fresh water system with reinforced hosing | Large bore rigid waste plumbing routed to side of tourer | Shower unit with ceramic ball mixer tap | Washroom hand basin with ceramic ball washroom mixer tap | Fully fitted vanity unit, wall mirrors and integral storage

NEW

Truma Crystal II water inlet and submersible pump | Walk in plastic lined shower cubicle (model specific)

KITCHEN EQUIPMENT

Spinflo recessed 4-burner hob unit incorporating flush fitting glass hinged lid | Spinflo combined grill and domestic style glass fronted oven plus flame failure device

NEW

Thetford 96 litre refrigerator with full width freezer compartment | Spinflo recessed sink with clip on draining board and ceramic ball mixer tap | Kitchen worktop laminate and matching edging

FURNITURE & SOFT FURNISHINGS

Free standing table with dedicated storage | Side dinette occasional table (model specific) | Chest of drawers with fold over coffee table (model specific) | Pull out roller slatted bed | Hinged bed box slatted tops for easy access | Sculpted wooden bunk fall out rails | Fully sprung upholstery (except split cushions used in bunk make up) | Loose fit drop-in carpet

NEW

Large aircraft style overhead storage lockers with re-profiled locker doors and domestic style metal hinges | Aircraft style overhead storage locker across the caravan front | Domestic style washroom door and handle | Bailey 'Cherry' furniture veneer | Standard 'Pacific' soft furnishings with co-ordinating lined curtains and scatter cushions

GENERAL EQUIPMENT

Remis flyscreen & sunblind to all principal windows | Fitted doorwell mat

NEW

Heki II tilting sun roof with ceiling lighting surround | Clear roof lights in centre of caravan (model specific)

SECURITY

Selectamark electronic tagging | Single key operation on all exterior doors | Vin no. etched to all exterior windows | Vin no. scribed in chassis member



Main image: Ranger 620/6, Inset: Thetford 96 litre refrigerator, Spinflo recessed 4-burner hob, Heki II tilting sunroof, Full height rear ABS panel.

Bed sizes

460/2

Front Saloon 6'6" x 4'6"
or 2 @ 6'1" x 2'3"

460/4

Front Saloon 6'6" x 4'2"
Rear Double 6'3" x 4'6"

470/4

Front Saloon 6'6" x 4'6"
Side Single 5'7" x 2'2"
O/Head Single 5'5" x 2'0"

500/5

Front Saloon 6'6" x 4'4"
or 2 @ 5'10" x 2'3"
Rear Double 6'8" x 4'1"
& Rear O/Head 6'5" x 2'0"

510/4

Front Saloon 6'6" x 4'4"
or 2 @ 5'11" x 2'3"
Side Single 5'11" x 2'2"
O/Head Single 5'10" x 2'0"

550/6

Front Saloon 6'6" x 4'1"
or 1 @ 6'1" x 2'3" &
1 @ 5'8" x 2'3"
N/Side Single 5'7" x 2'2"
N/S O/Head Single 5'5" x 2'0"
Rear Single 5'7" x 2'0"
Rear O/Head 6'8" x 1'11"

620/6

Front Saloon 6'6" x 4'7"
or 2 @ 6'2" x 2'3"
O/Side Single 5'7" x 2'2"
O/Side O/Head Single 5'5" x 2'0"
Rear Double 6'3" x 4'6"



Technical data

	460/2	460/4	470/4	500/5	510/4	550/6	620/6
Berths	2	4	4	5	4	6	6
Internal Length	4.447m 14'7"	4.631m 15'3"	4.631m 15'3"	5.059m 16'7"	5.059m 16'7"	5.408m 17'9"	6.286m 20'7"
Shipping Length	6.058m 19'11"	6.242m 20'6"	6.242m 20'6"	6.670m 21'11"	6.670m 21'11"	7.019m 23'0"	7.890m 25'11"
Overall Width	2.19m 7'2"	2.19m 7'2"	2.19m 7'2"	2.19m 7'2"	2.19m 7'2"	2.19m 7'2"	2.19m 7'2"
Overall Height	2.71m 8'10"	2.71m 8'10"	2.71m 8'10"	2.71m 8'10"	2.71m 8'10"	2.71m 8'10"	2.71m 8'10"
Internal H'room	1.90m 6'3"	1.90m 6'3"	1.90m 6'3"	1.90m 6'3"	1.90m 6'3"	1.90m 6'3"	1.90m 6'3"
Awning Size	892cm	911cm	911cm	954cm	954cm	989cm	1088cm
Tyre Sizes	185/65 R14 LI93N	185/65 R14 LI93N	185/65 R14 LI93N	185/65 R14 LI93N	185/65 R14 LI93N	185/65 R14 LI93N	185/65 R14 LI93N
MTPLM	1131kg 22.3cwt	1184kg 22.3cwt	1179kg 23.2cwt	1271kg 25.0cwt	1240kg 24.4cwt	1298kg 26.6cwt	1540kg 30.3cwt
MRO	941kg 18.5cwt	972kg 19.1cwt	967kg 19.0cwt	1044kg 20.6cwt	1023kg 20.1cwt	1058kg 20.8cwt	1281kg 25.2cwt
Payload Allowance for Essnt Hab'n Equipment	68kg 1.3cwt	68kg 1.3cwt	68kg 1.3cwt	68kg 1.3cwt	68kg 1.3cwt	68kg 1.3cwt	68kg 1.3cwt
Payload Allowance for Personal Effects	100kg 2.0cwt	122kg 2.4cwt	122kg 2.4cwt	137kg 2.7cwt	127kg 2.5cwt	150kg 3.0cwt	159kg 3.1cwt
Payload Allowance for Optional Equipment	22kg 0.4cwt	22kg 0.4cwt	22kg 0.4cwt	22kg 0.4cwt	22kg 0.4cwt	22kg 0.4cwt	22kg 0.4cwt
Total User Payload	190kg 4.2cwt	212kg 4.2cwt	212kg 4.2cwt	227kg 4.5cwt	217kg 4.3cwt	240kg 4.7cwt	249kg 4.9cwt

A Tolerance in the MRO has been allowed for in the calculations of Payload Margins. The awning length measurement shown is to be interpreted as a guide only and enquiry should be made to individual awning manufacturers for the correct size. All data is calculated using metric weights & measurements. The imperial figures quoted are conversions thereof.



Ranger 460/2

Award winning Ranger Series 5



www.bailey-caravans.co.uk

South Liberty Lane, Bristol BS3 2SS, England



80% Recycled paper



Forest Stewardship Council

This brochure does not constitute an offer by Bailey Caravans Ltd (Bailey). Bailey reserves the right to alter specifications and prices as market and supply conditions demand. Your Bailey retailer will confirm all specification details prior to you making your purchasing decision. E. & O. E. Bailey retailers sell our products of their own choice and not as agents of Bailey. Accordingly they have no authority to bind Bailey or to make any representation or undertaking whatsoever on behalf of Bailey. All household items illustrated in this brochure are used to enhance photography and are for display purposes only. They are not supplied with your touring caravan. Photographic colour reproduction is subject to the limitations of the production process.

Product photography in this brochure was shot on location at the following Caravan Club site: Hurn Lane Caravan Club Site (members only), Burnham-On-Sea, Somerset. Tel: 01278 751412

